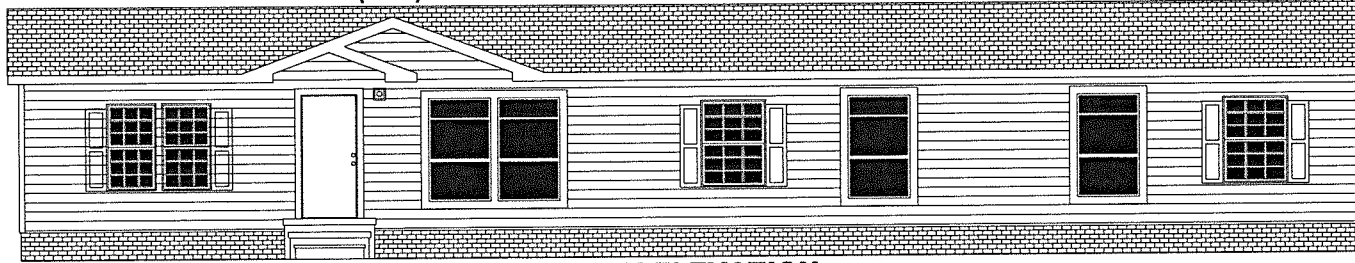
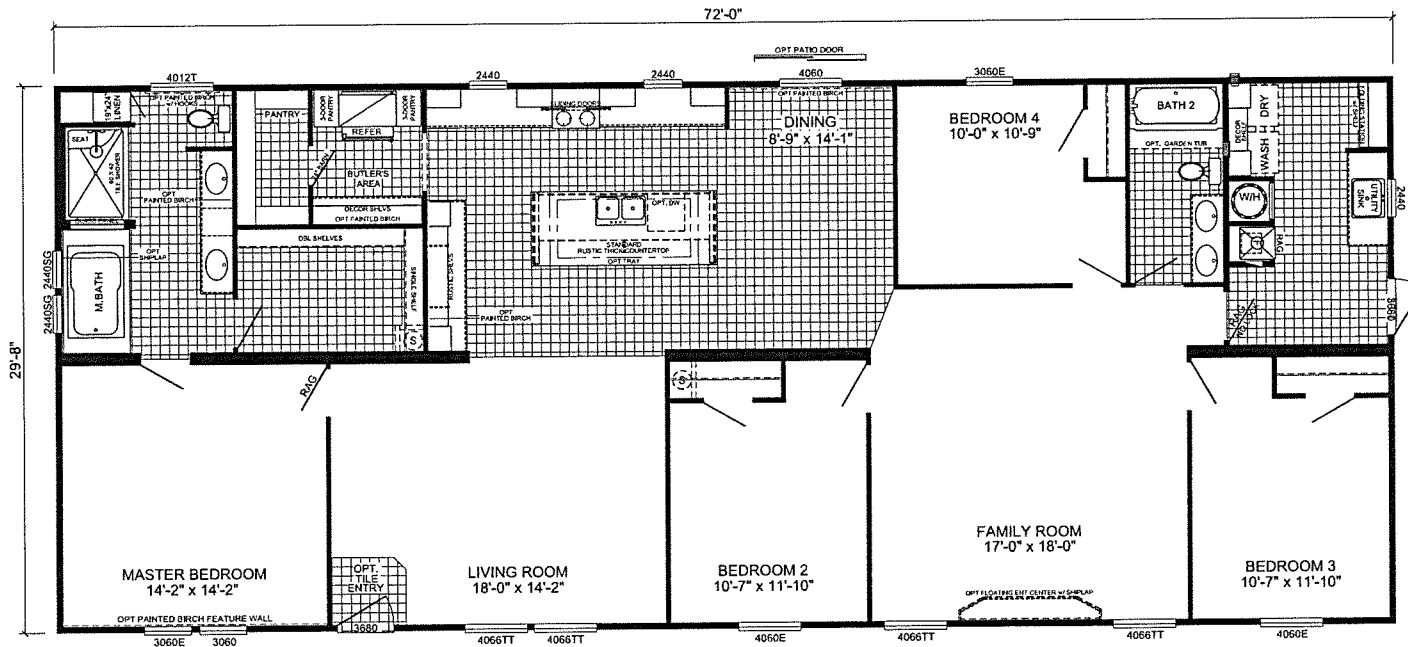


**EXTERIOR VINYL SHAKER PACKAGE
(OPT)**



FRONT ELEVATION



H-3724D-XT
4-BEDROOM / 2-BATH
32 X 76 - Approx. 2136 Sq. Ft.

Date: 06/05/24

- * All room dimensions include closets and square footage figures are approximate.
- * Skirting shown is optional.
- * Live Oak Homes reserves the right to modify product offering at any time.

Dogwood