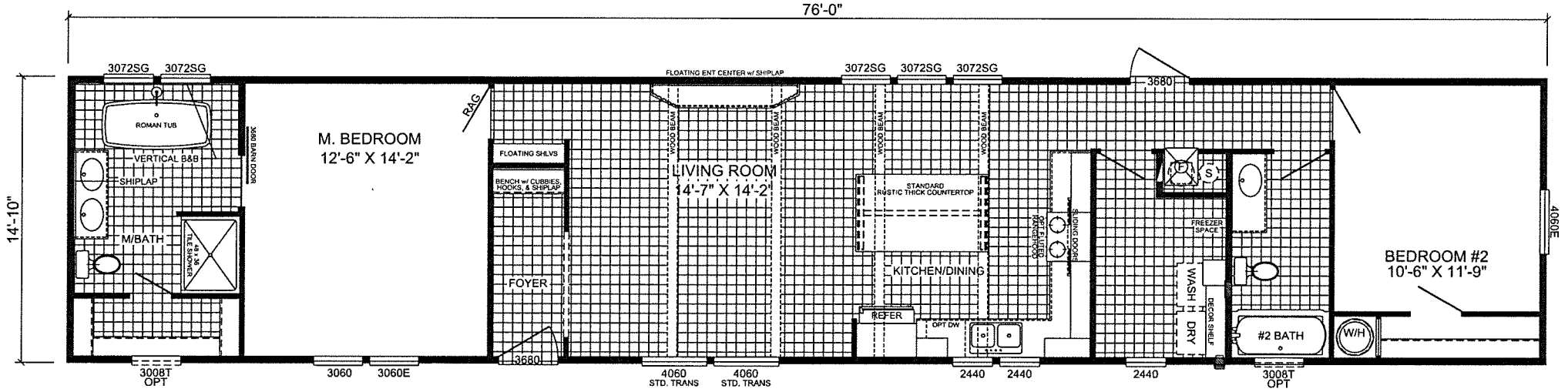
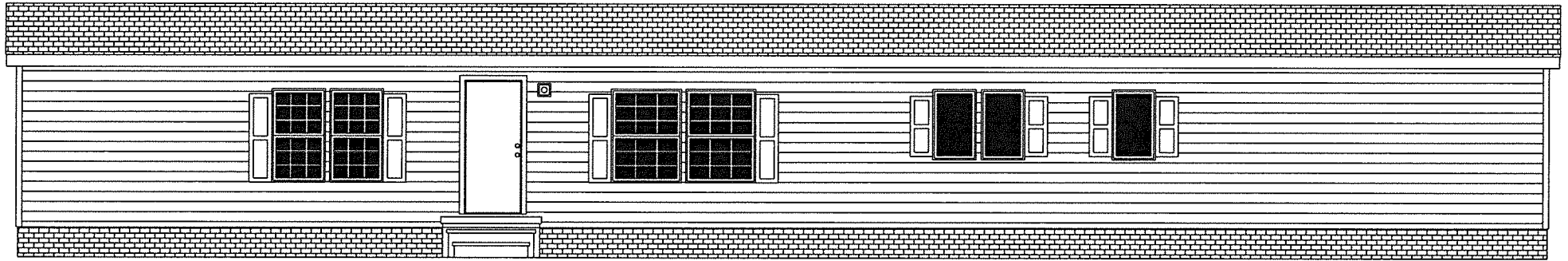


LEXI



L-5762F-SIG

2-BEDROOM / 2-BATH

16 X 80 - Approx. 1130 Sq. Ft.

Date: 05/09/24

- * All room dimensions include closets and square footage figures are approximate.
- * Transom windows are available on optional 9'-0" sidewall houses only.
- * Live Oak Homes reserves the right to modify product offering at any time.

WIND ZONE 3 w/ 9' WALLS NOT AVAILABLE

OAKS
Signature
Series