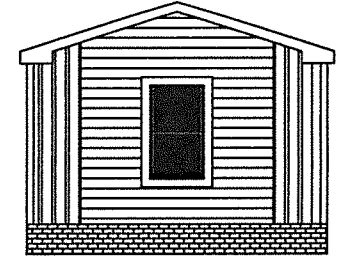
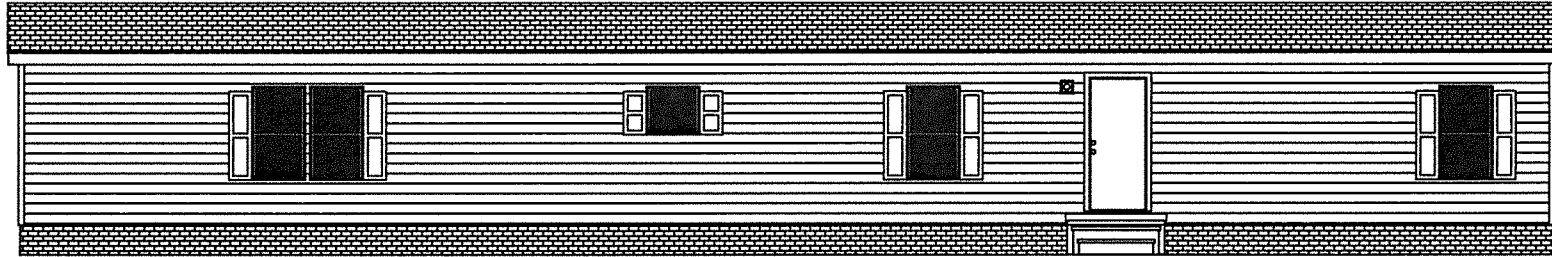
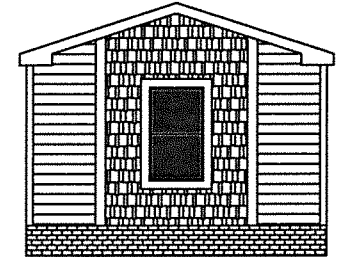


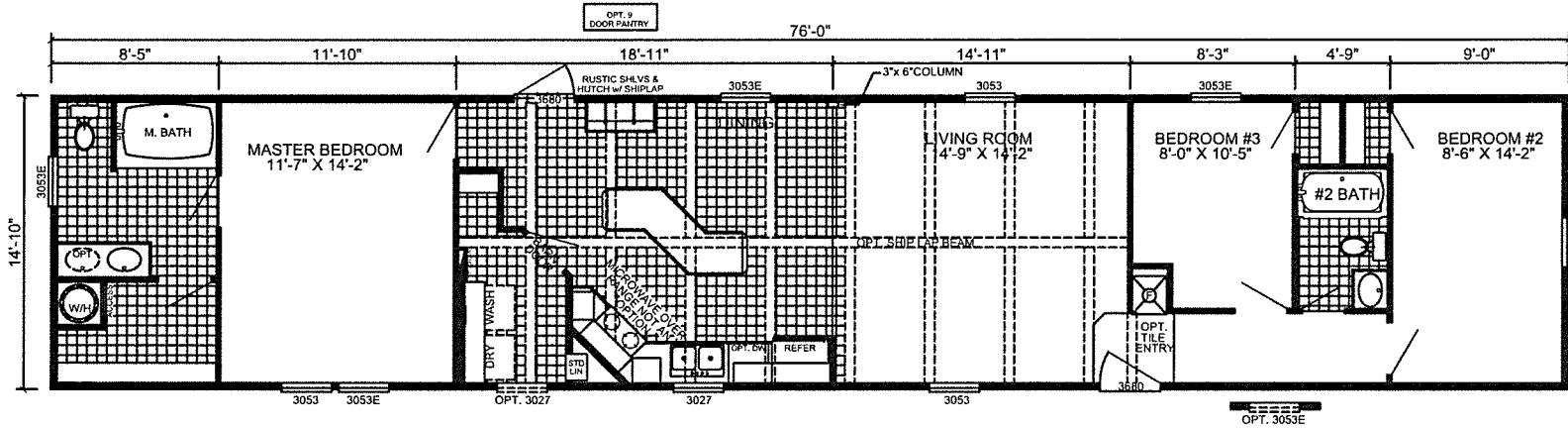
ACE



OPT. HITCH END

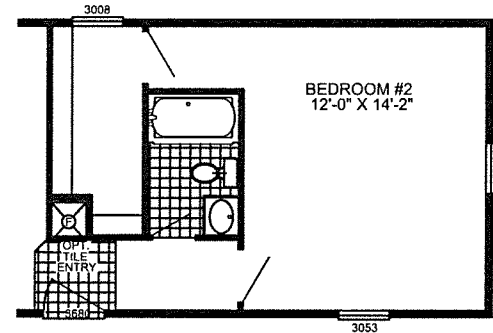


OPT. SHAKE ACCENT



L-5763H-OAK
3-BEDROOM / 2-BATH
16 X 80 - Approx. 1130 Sq. Ft.

- Date: 07/02/19
- * All room dimensions include closets and square footage figures are approximate.
 - * Transom windows are available on optional 9'-0" sidewall houses only.
 - * Live Oak Homes reserves the right to modify product offering at any time.



OPT. 2 BEDROOM

