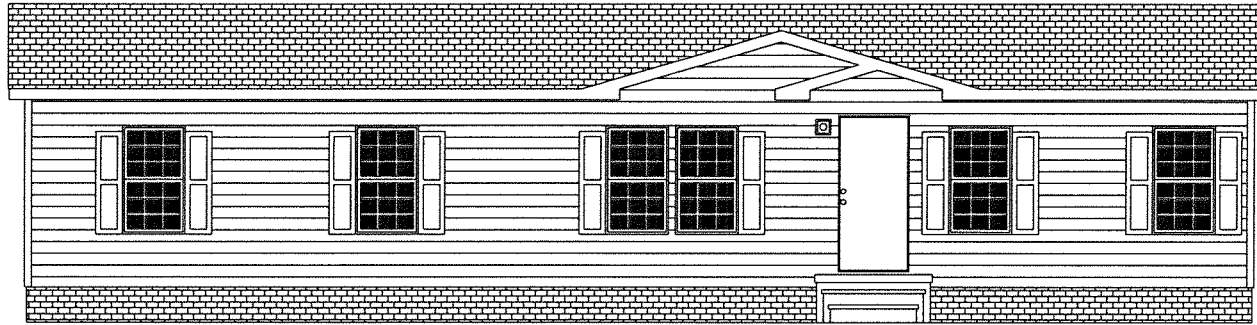
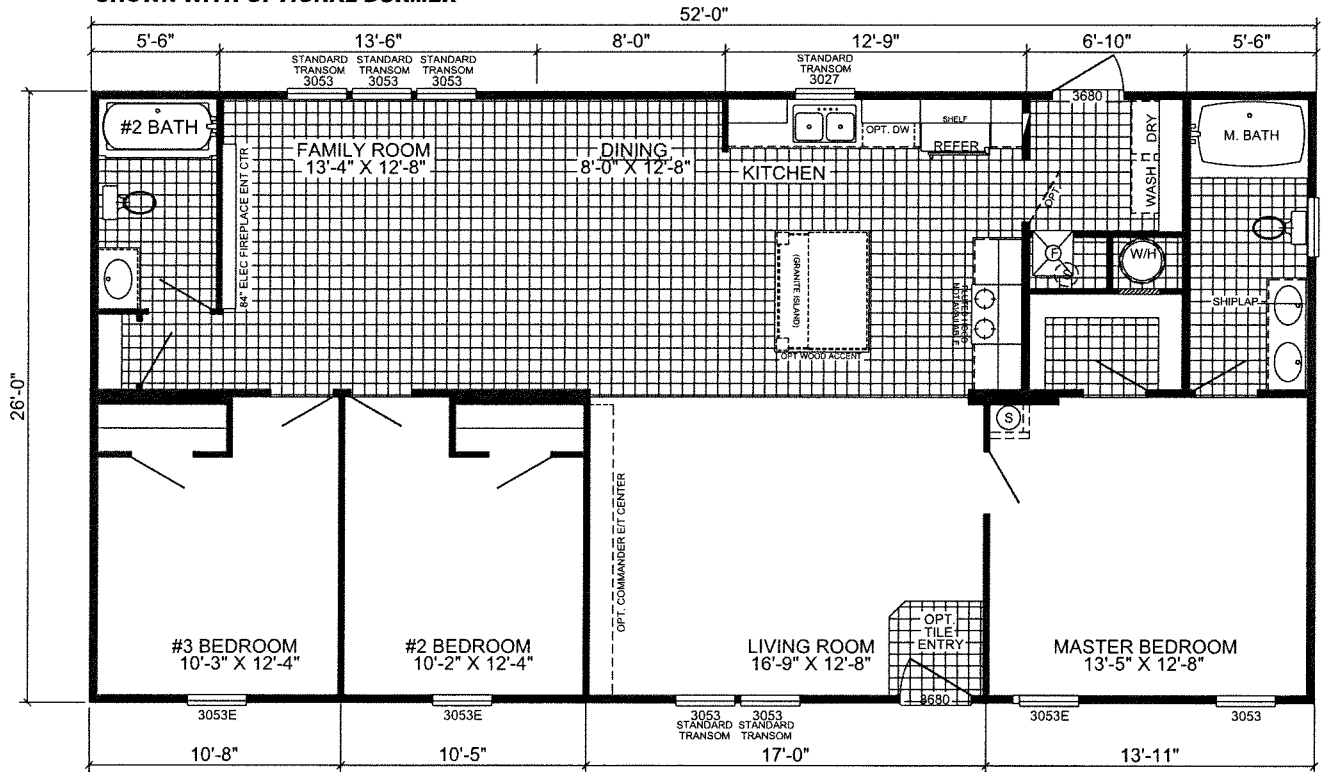


# MAYBERRY



SHOWN WITH OPTIONAL DORMER



**S-2523G-OAK**  
**3-BEDROOM / 2-BATH**  
**28 X 56 - Approx. 1352 Sq. Ft.**

Date: 09/27/19

\* All room dimensions include closets and square footage figures are approximate.

\* Transom windows are available on optional 9'-0" sidewall houses only.

\* Live Oak Homes reserves the right to modify product offering at any time.

**OAKS**  
*Signature*  
 Series