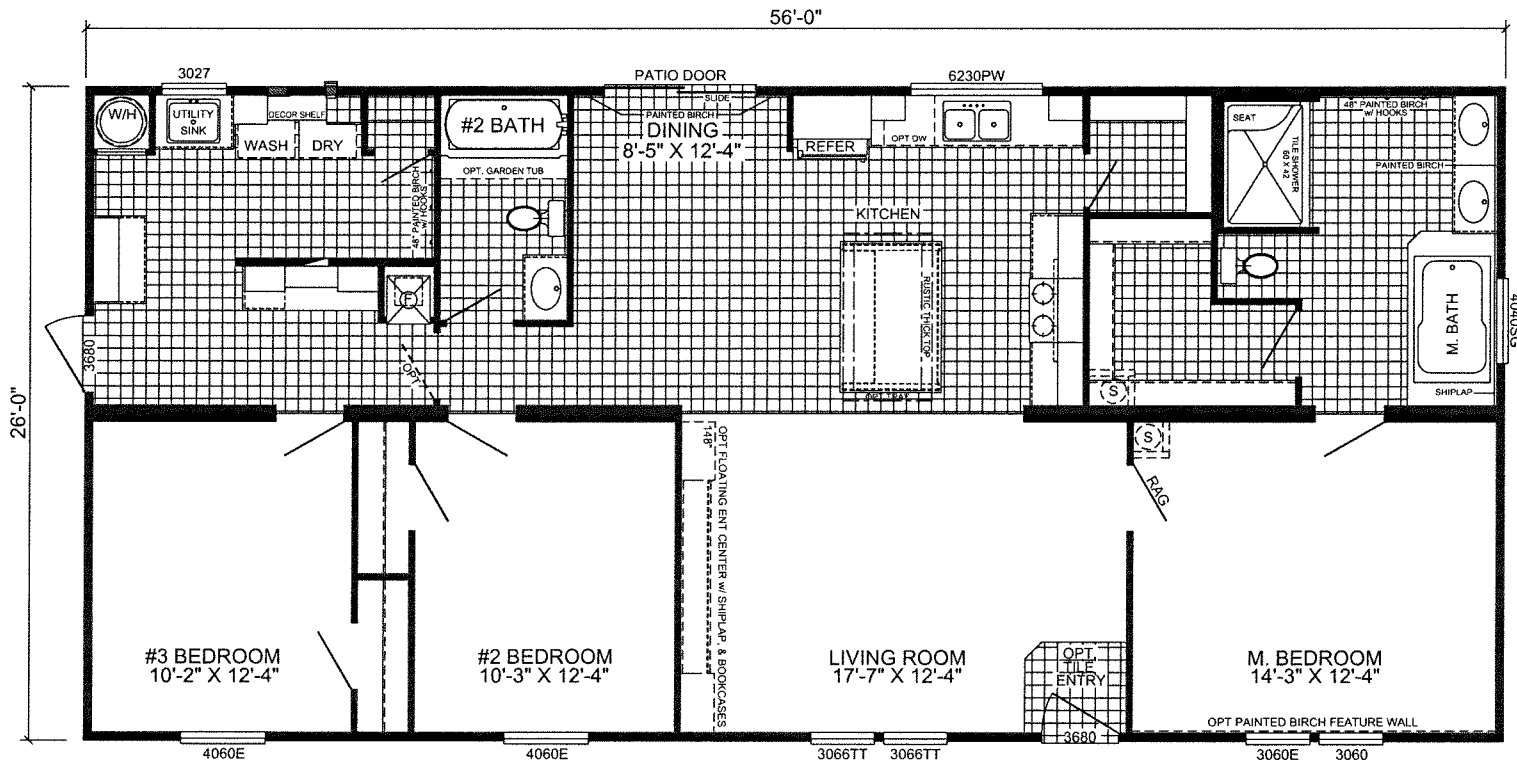




**FRONT ELEVATION**



**H-2563M-PS**

**3-BEDROOM / 2-BATH**

**28 X 60 - Approx. 1456 Sq. Ft.**

Date: 04/03/23

\* All room dimensions include closets and square footage figures are approximate.  
 \* Transom windows are available on optional 9'-0" sidewall houses only.

FLOATING ENT CENTER W/ SHIRLAP, BOOKCASES, & ELECT P

**DENALI**