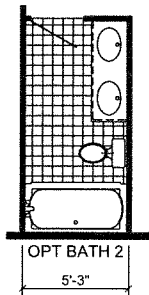
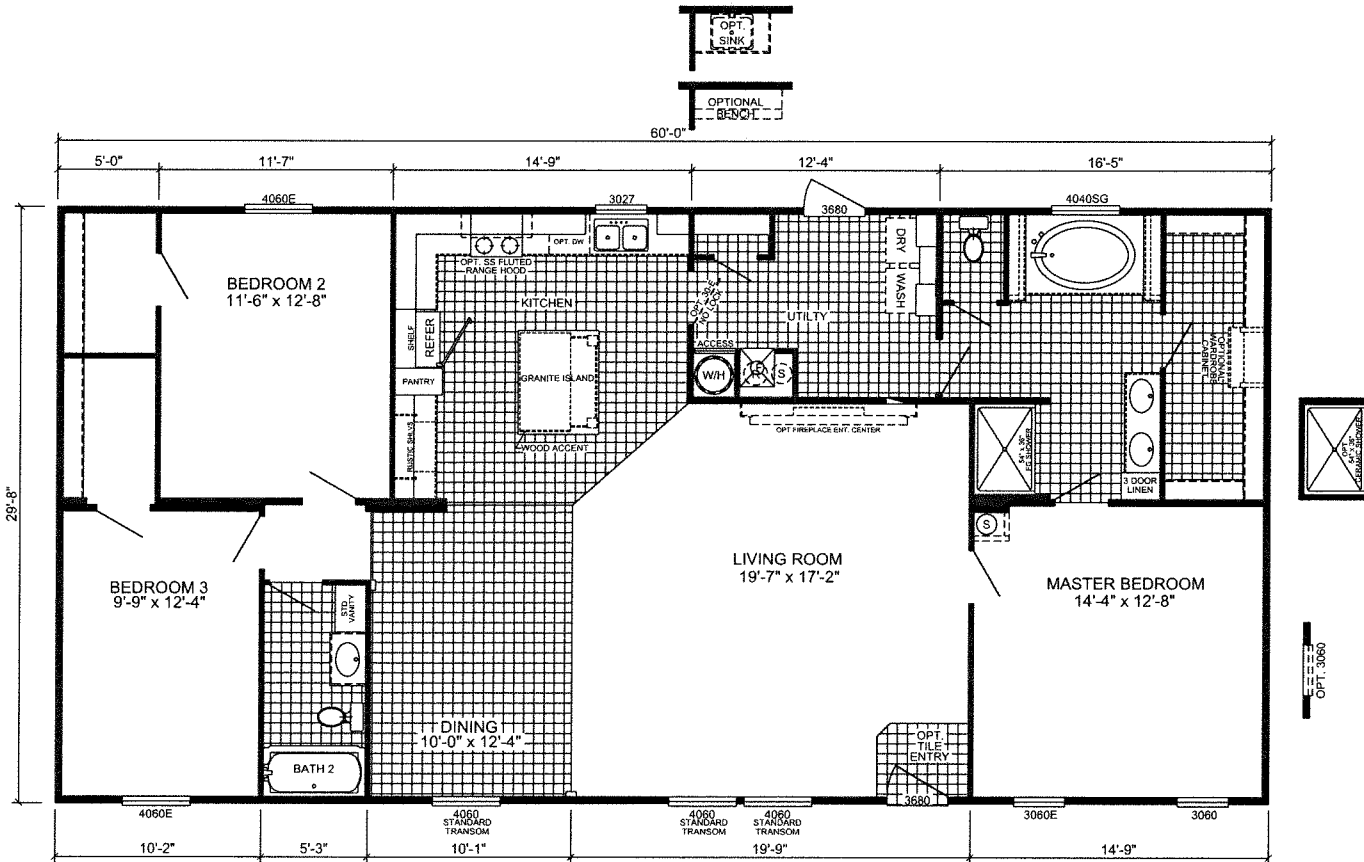
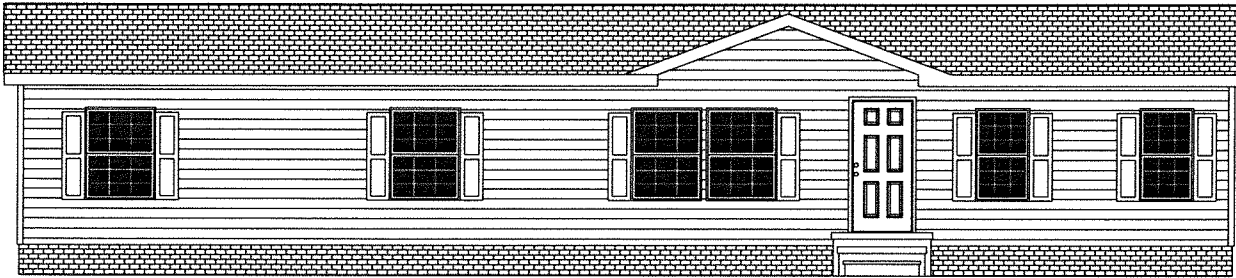


# POWERSTROKE



**M-3603H-OAK**  
**3-BEDROOM / 2-BATH**  
**32 x 64 - Approx. 1760 Sq. Ft.**

Date: 09/26/18

- \* All room dimensions include closets and square footage figures are approximate.
- \* Transom windows are available on optional 9'-0" sidewall houses only.
- \* Live Oak Homes reserves the right to modify product offering at any time.