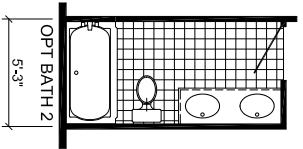
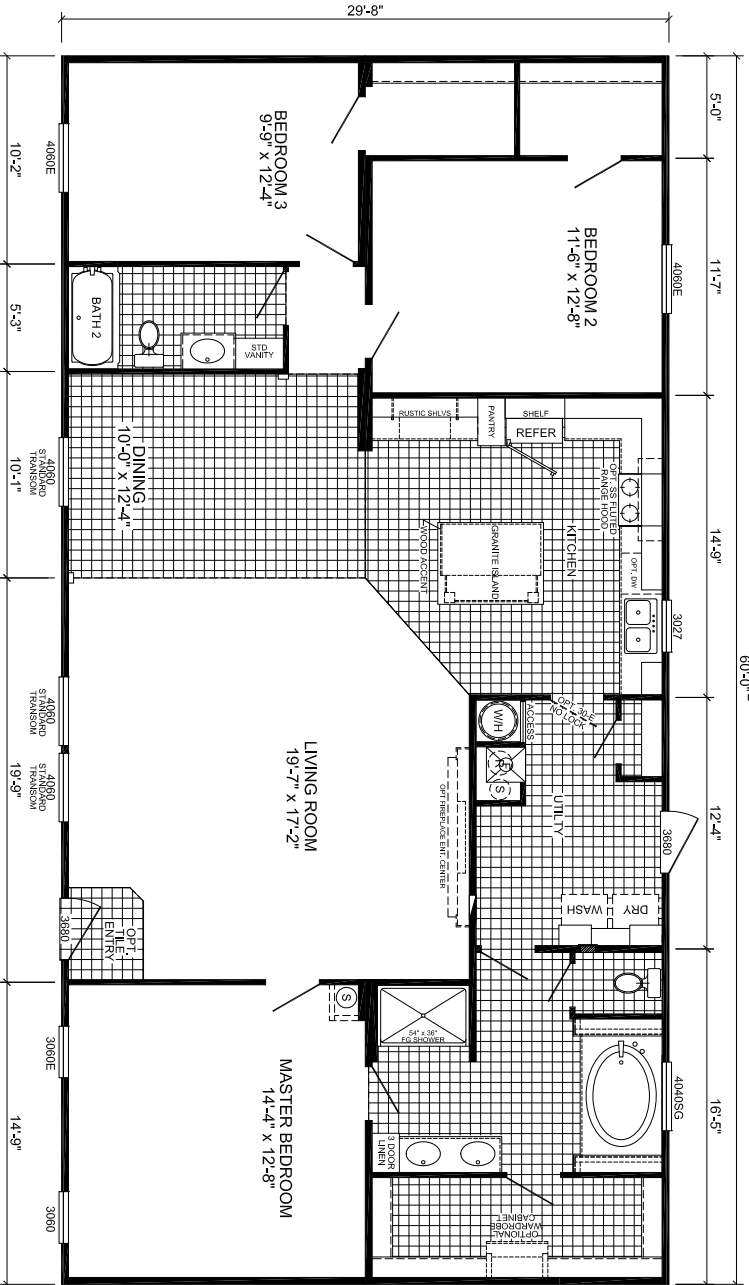
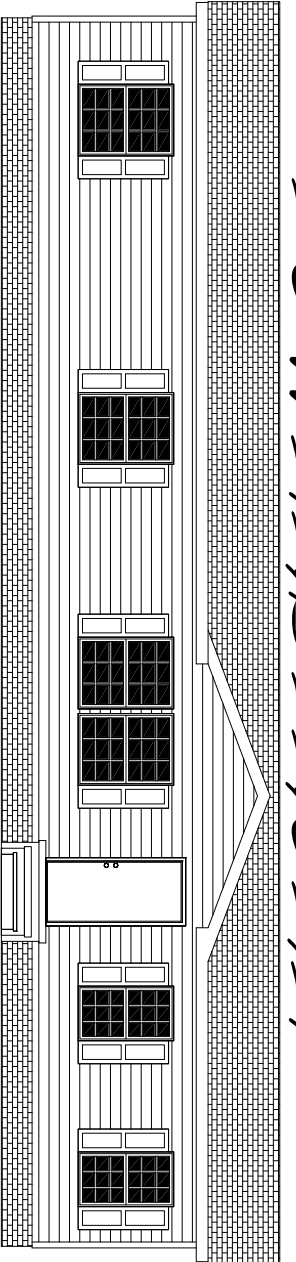


POWERSTROKE



M-3603H-OAK 3-BEDROOM / 2-BATH 32 x 64 - Approx. 1760 Sq. Ft.

Date: 09/26/18

- * All room dimensions include closets and square footage figures are approximate.
- * Transom windows are available on optional 9'-0" sidefall houses only.
- * Live Oak Homes reserves the right to modify product offerings at any time.

OPT. 3060

