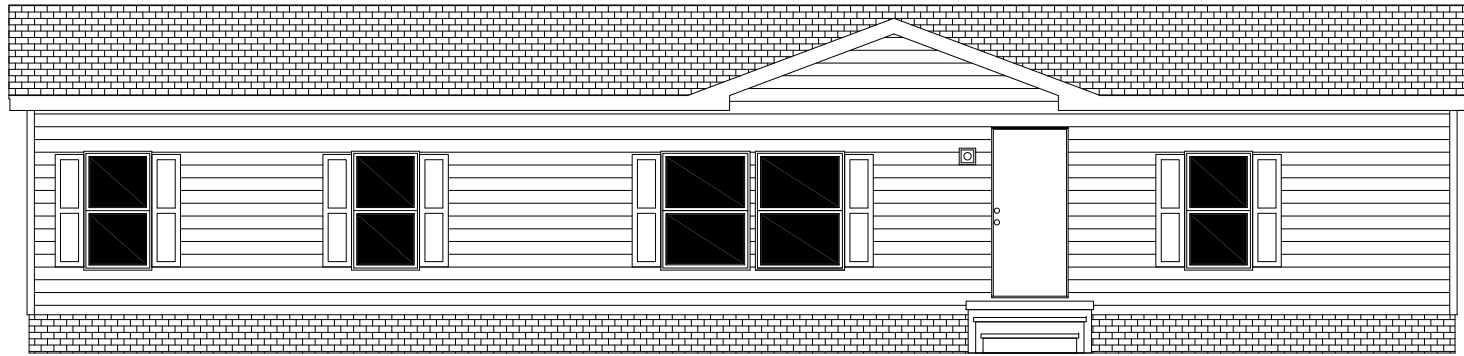
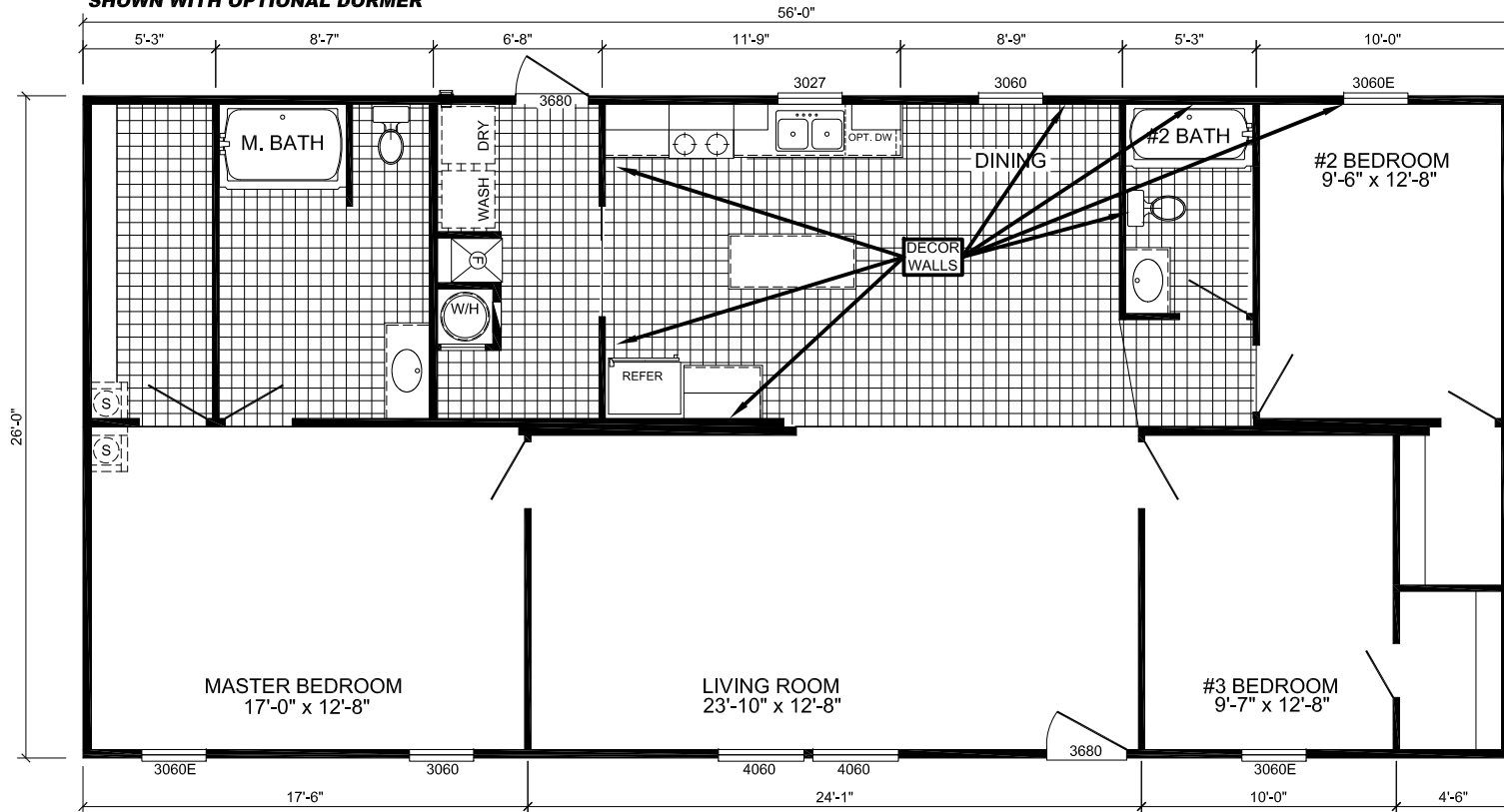


SPRINTER



SHOWN WITH OPTIONAL DORMER



L-2563G - RUNNER
3-BEDROOM / 2-BATH
28 x 60 - Approx. 1456 Sq. Ft.

Date: 04/06/21

* All room dimensions include closets and square footage figures are approximate.

* Transom windows are available on optional 9'-0" sidewall houses only.

* Live Oak Homes reserves the right to change product offering at any time.